

FIVE FOSTER HILL ROAD:
A PARK TO CELEBRATE NATURAL AND CULTURAL HERITAGE.

MAKING CONNECTIONS







Corner Area facing East



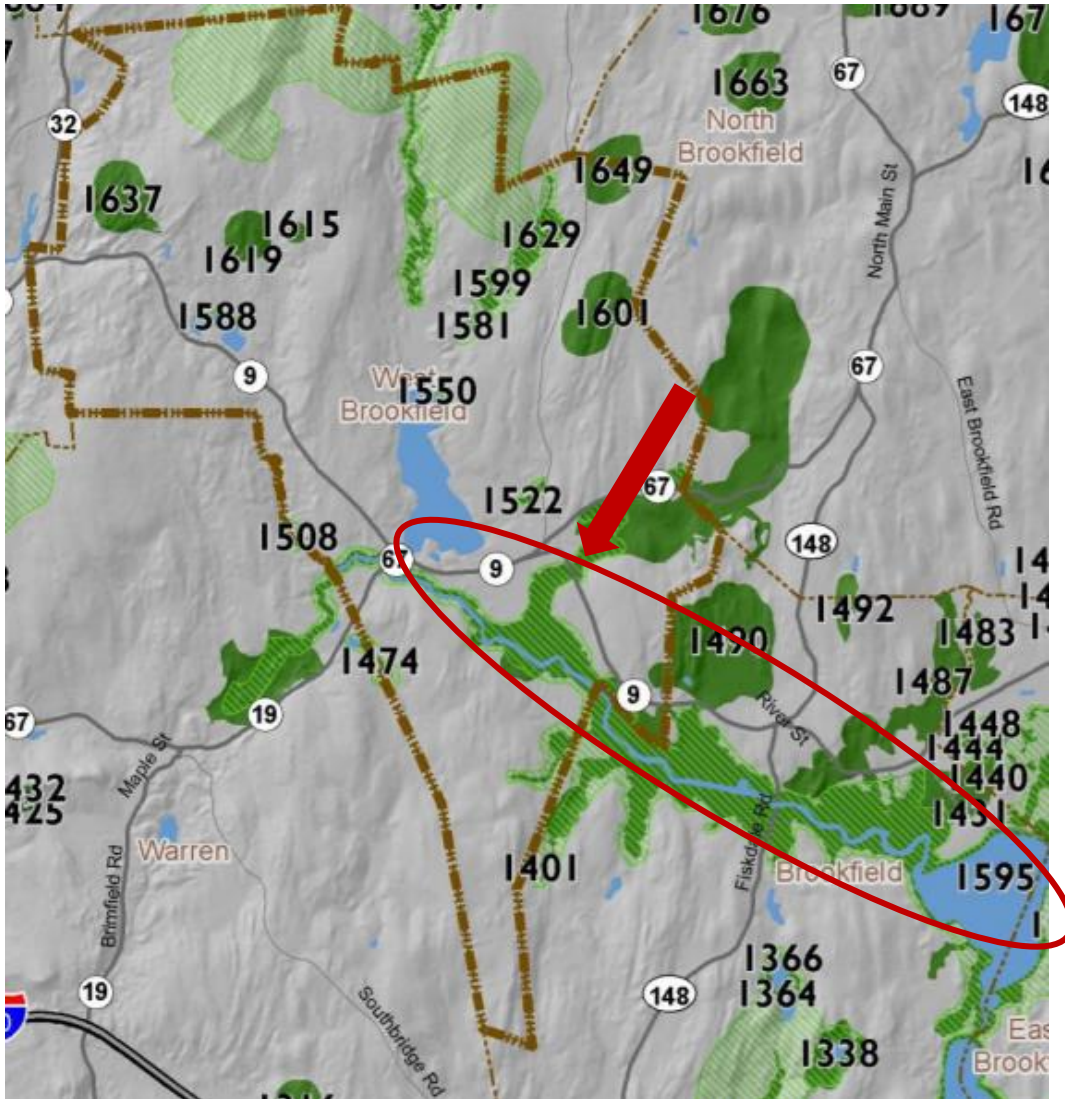
Center Area



East Area facing South

5 FOSTER HILL ROAD

SITE FEATURES



BIOCORE:

Core Habitat and Critical Natural Landscape

FIVE FOSTER HILL ROAD, WEST BROOKFIELD

Aquatic Cores are intact river corridors within which important physical and ecological processes of the river or stream occur. They delineate integrated and functional ecosystems for fish species and other aquatic Species of Conservation Concern.

Area 1595 : Aquatic corridor

A 4,335-acre Core Habitat featuring Wetland Core, Aquatic Core, Priority Natural Communities, and Species of Conservation Concern.

5 FOSTER HILL ROAD

NATURAL FEATURES- BIOMAP 2

WILDLIFE CONSERVATION



In southwestern Worcester County, the **Quaboag River** and its tributaries, the Sevenmile River, the Brookfield River, and **Coys Brook**, wind slowly through four miles of peatlands and marshes, as well as two lakes, Quaboag Pond and Quacumquasit Pond.

This watery landscape supports one of southern New England's largest and most stable populations of the Endangered American Bittern, as well as nesting Sedge Wrens, Least Bitterns, Pied-billed Grebes, and King Rails in smaller numbers. The marshes are also home to one of the world's largest populations of the globally rare Long's Bulrush.



DEEP EMERGENT MARSHES

- Deep Emergent Marshes are graminoid wetlands occurring on saturated soils that are seasonally flooded. They generally form in broad, flat areas bordering slow rivers or along pond margins, and often grade into shrub swamps.
- This Core has two examples of Deep Emergent Marsh including one that is of exemplary species diversity, size, and quality, and is home to both state-listed rare plants and animals. Shrub Swamp communities are a common and variable type of wetlands occurring on seasonally or temporarily flooded soils. They are often found in the transition zone between emergent marshes and swamp forests. This example of Shrub Swamp is in excellent condition and is an unusual and large variant enriched by groundwater seepage and dominated by Canadian Burnet. Wetlands Cores are the least disturbed wetlands in the state within undeveloped landscapes of those with intact buffers and little fragmentation or other stressors associated with development. These wetlands are most likely to support critical wetland functions (i.e., natural hydrologic conditions, diverse plant and animal habitats, etc.) and are most likely to maintain these functions into the future.



5 FOSTER HILL ROAD



NATURAL FEATURES- BIOMAP 2

UNIQUE ACIDIC FENS

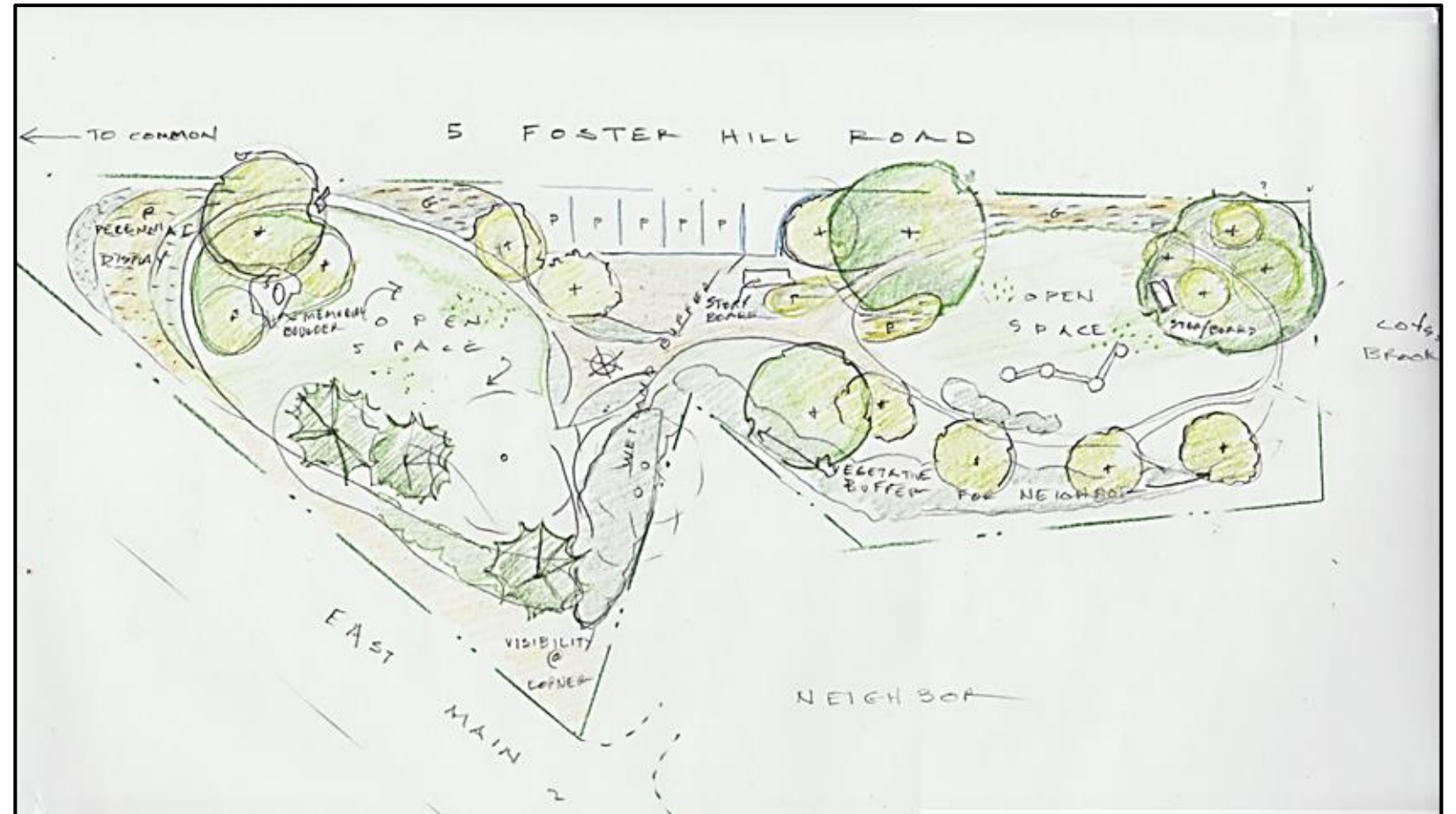
- Acidic Shrub Fens are shrub-dominated acidic peatlands found primarily along pond margins in the eastern and central part of the state. These wetland communities experience some groundwater and/or surface water inputs, but no calcareous seepage. This is a large and pristine example of Acidic Shrub Fen that is part of a larger mosaic of acidic wetland ecosystems. Despite the presence of some exotic invasive species, it is in very good condition.



LANDSCAPE PLAN

CONCEPT

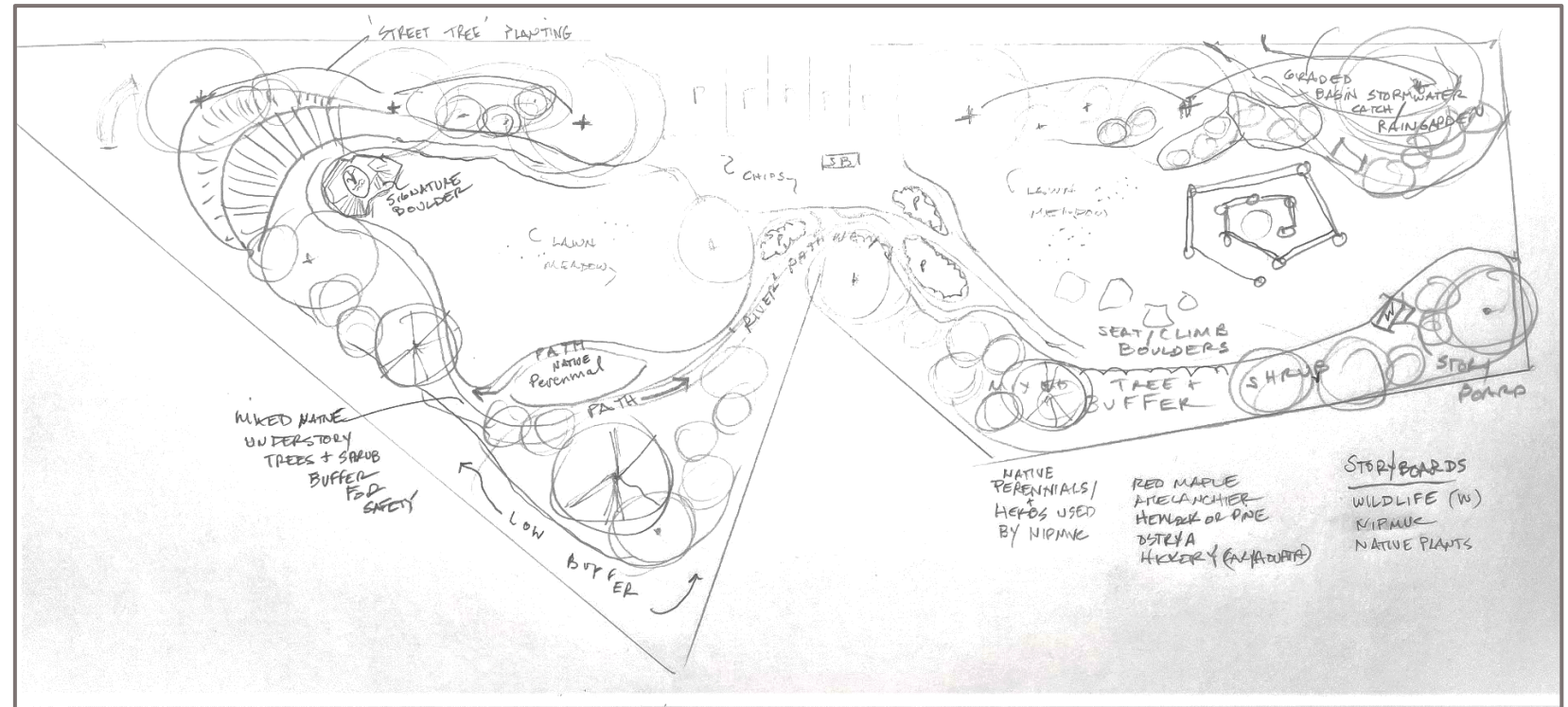
- ❖ Space offers connection to Town Common, preserves and restores natural resources on this lot adjacent to Coys Brook.
- ❖ Plan provides 2 open comfortable spaces to explore, observe natural processes, socialize.
- ❖ Park honors original people, the Nipmuc, 'People of the Water', who for millennia inhabited these lands.
- ❖ Boulder sign memorializes Donors that helped preserve the site.
- ❖ Signboards celebrate and inform users of important historic and natural resources.

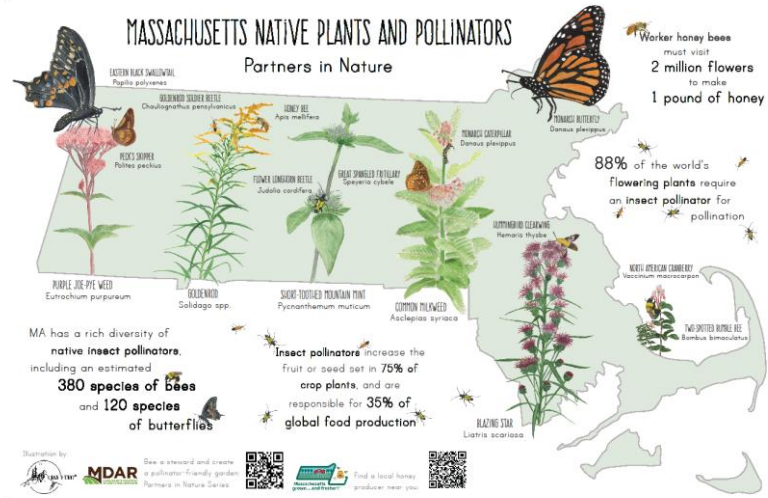


LANDSCAPE PLAN PROGRAM

The Design will encourage site ability to contribute to environmental health of the area.

- ❖ Mitigate pollution with passive stormwater management/ rain basin-garden; offers valuable habitat for beneficial wildlife.
- ❖ Path system plays with meandering stream concept, connecting both spaces.
- ❖ Vegetative buffers provide safety and screening.
- ❖ Nature Based Recreation
- ❖ Gardening
- ❖ Wildlife preservation- songbirds, pollinators, beneficial critters
- ❖ Tree Plantings





Use of appropriate native plants attract pollinators, songbirds, and offer color and attractive year round form.



Plantings also serve to create street barriers, and privacy buffers for neighbors.



5 FOSTER HILL ROAD

PRECEDENT STUDIES

DESIGN FEATURES



Amenities such as benches, climbing posts and boulders, could be composed from site trees that will be brought down as hazard trees. Projects could include earth art and natural building activities.



5 FOSTER HILL ROAD



PRECEDENT STUDIES

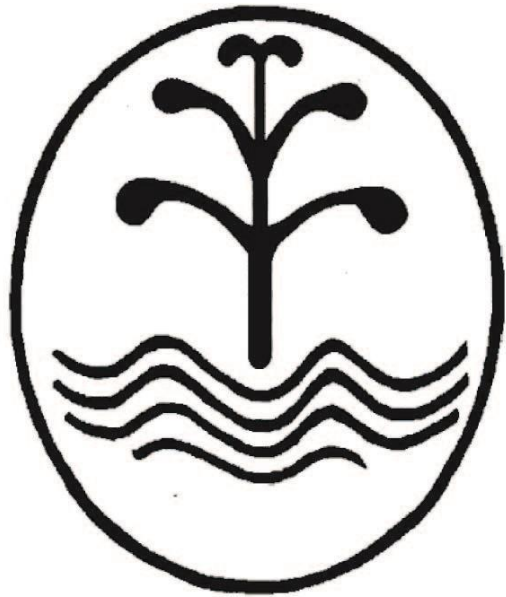


AMENITIES, ACTIVITES

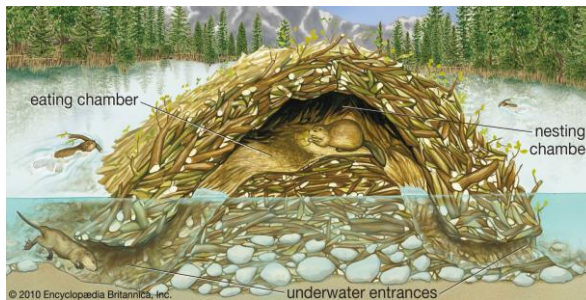
SIGNAGE

Appropriate symbols can be incorporated into interpretive signage boards or as site specific sculpture or carving.

Signage boards can engage users of park by illustrating original Nipmuc Culture, (basket making with grasses as seen onsite, wigwam frame) Wildlife that lives on the water corridor.



Nipmuc Nation logo



5 FOSTER HILL ROAD

SIGNAGE