

2019 Annual Report



Conserving the land, Preserving our heritage

25 Years of Conservation

Land Conservation

St. Cyr and Sweeney CR donation:

Accepted a conservation restriction donation on nearly 90-acres of fields and woods in West Brookfield. The land can be managed as a small farm and woodlot into the future.

Leahy

Pre-acquisition for MassWildlife:

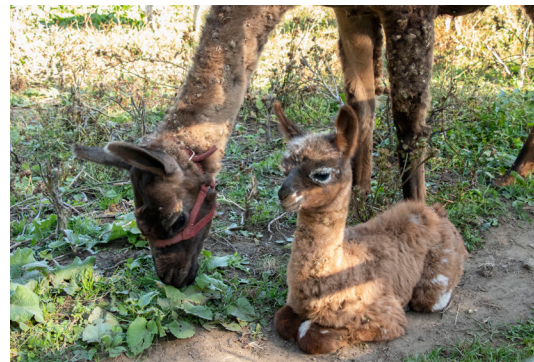
Purchase (and later transfer) of the 45-acres of woods in Townsend that is adjacent to the Squannacock Wildlife Management Area, to allow permanent conservation while state acquisition processes were completed. By pre-acquiring the land, the elderly landowners were able to have their conservation goals fulfilled in a timely manner.

Leadership Circle Events

Donors contributing \$500 or more annually are invited to participate in a variety of special events each year. In May members took a road-trip to Wicked Tulips to view and pick tulips from a 20-acre farm. It was cold and windy, but many beautiful tulips were cut and enjoyed. A trip to the Beneski Museum of Natural History was enjoyed by Leadership Circle members in late October. We learned about the dinosaur footprints and skeletons, local geology and minerals in the collection.

Education and Events

- 25th anniversary celebratory Farm-to-Table dinner on Magi's Lawn, a new outdoor party space at our offices, where a local farm and catering business served a wholesome meal of home-grown ingredients while we enjoyed good company and stories from the organization's first twenty-five years
- Special youth education programs including Weekly Wander Wednesdays, interactive art at Mandell Hill with a ball drop, stained glass trail markers and tree plucking strings, a student created booklet on Wendemuth Meadow, and Christmas bird count
- Forever Farm Tour to highlight conserved farms that grow a variety of food crops, and include walking trails and scenic vistas
- A photo contest encouraged property visitors to share their best outdoor shots in categories such as flowers, wildlife, water, close-ups and black and white
- Monthly potluck suppers with a variety of themes including bird carving, eating invasive plants, looking at the stars, nature art projects, and population dynamics of black bears in Massachusetts



Serving the Central Massachusetts towns of Barre, Hardwick, Hubbardston, New Braintree, North Brookfield, Oakham, Petersham, Ware, and West Brookfield

P.O. Box 5, 120 Ridge Road, Hardwick, MA 01037 | 413.477.8229 | EQLT.org

2019 Financial Review

Unaudited Figures

Income

Category.....	Amount	Percent of Total Income
Operating Support from Morss Property Endowment	\$ 0	0%
Grants and Contract	\$ 60,000	19%
Fundraising and Membership.....	\$ 189,647	61%
Property and Other Revenue.....	\$ 61,881	20%
TOTAL INCOME.....	\$ 311,527	

Expenses

Category.....	Amount	Percent of Total Income
Program Services	\$ 183,789	64%
Advancement	\$ 57,148	20%
General and Administrative.....	\$ 45,709	16%
TOTAL EXPENSE.....	\$ 286,646	

Permanent and Capital Funds

Category.....	Beginning Balance	Year End
Morss Property Endowment.....	\$ 531,507	\$ 676,340
Conservation Restriction.....	\$ 87,653	\$ 105,122
Monitoring and Enforcement Fund		
Farms for the Future Fund	\$ 80,417	\$ 89,046
Sustainability Fund	\$ 389,824	\$ 592,422

Tree Planting

Along with our partners, Opacum Land Trust and the MassConn Sustainable Forest Partnership, received a \$252,000 US Forest Service grant to plant 1,000 trees in Ware over the next three years. Urban trees have profound benefits by reducing pollution, lowering flooding impacts, improving health and beautification, and increasing property values. An initial tree planting event in Grenville Park took place in early October and twenty-two (22) trees were added to the park landscape. The remaining trees will be planted in the downtown neighborhoods at private homes, housing complexes, the school campus and along town streets over the next three years.

Mass Central Rail Trail

A ½ mile of rail trail was built at the Frohloff Farm in Ware along with a 500-foot accessible loop that takes visitors to the bank of the Ware River. The trail surface is firm for individuals of all abilities and wheelchair accessible.

Country Store Improvements

- Install seventy-two (72) solar panels on the main building to generate approximately 50% of the store's annual electrical usage
- Begin improvements at the East Street exit door by installing a granite stone landing and railing in-keeping with the historic nature of the building
- Install a mini-split air conditioning and heating unit to improve building efficiency and ability to keep the building cooler during 90+ days

THE EAST QUABBIN LAND TRUST works to foster the sustainable use of our natural and historic resources for the benefit of all generations through the conservation and stewardship of the farms, woods and waters in our region of Massachusetts.

BOARD & STAFF

Judith Jones	NEW BRAINTREE, <i>President</i>
Mark Mattson.....	OAKHAM, <i>Vice President</i>
Jerry Reilly.....	HARDWICK, <i>Treasurer</i>
Stan White.....	HARDWICK, <i>Clerk</i>
Stephen Brewer.....	BARRE
Ann Hicks.....	NORTH BROOKFIELD
Philip Hubbard.....	BARRE
Jody Kablack	NEW BRAINTREE
Martha Klassanos.....	WARE
Ginny Rich	BARRE
Rick Romano.....	HARDWICK
Harry Webb.....	HARDWICK
Cynthia Henshaw.....	<i>Executive Director</i>
Richard Cavanaugh.....	<i>Development Coordinator</i>
Pattie Rich.....	<i>Bookkeeper</i>
Jess Cusworth.....	<i>Program Coordinator</i>
Sophie Andrews.....	<i>Youth Education Coordinator</i>
Haley Hewitt.....	<i>Youth Education Coordinator</i>
Terry Briggs	<i>Board Emeritus</i>
Chris Buelow.....	<i>Board Emeritus</i>
Lucinda Childs.....	<i>Board Emeritus</i>

Wunohke Guild Fund

Members of the Wunohke Guild have made a gift to the East Quabbin Land Trust through their estate plans and let us know that they have done so. Wunohke means "beautiful land" in the language of the Nipmuc, the descendants of the first contact peoples who lived and traveled throughout the region. The first gifts are recognized including gifts of life insurance, bequests of cash and property.

Property Stewardship

- Visitor enhancements at the Mass Central Rail Trail including pollinator plant gardens, improved picnic table areas, and trail clearing
- The llamas grazed at Mandell Hill again, and this year a new-born appeared on September 18th to our surprise
- Monitored eighteen conservation restrictions and seventeen Preserves