

---

AUCTION CATALOGUE

---

Silent & Live Benefit Auctions

Restore the Store

COMMUNITY BENEFIT



\*

SATURDAY, JULY 27, 2013

ON PETERSHAM COMMON

PETERSHAM, MASSACHUSETTS

An initiative of the East Quabbin Land Trust  
and the Petersham community



We can only be said to be alive in those moments  
when our hearts are conscious of our treasures.

~ Thornton Wilder, 1897–1975, American novelist and playwright,  
his works include the classic play, *Our Town*



The Country Store, circa 1923

*Thank you to all for the Restore the Store effort!*

Grateful thanks for the dedication, energy, and generous spirit of

Private Donors

Business Donors

Auction Donors

Guest Musicians

Volunteer Helpers

Committee Members

Special Guests

and to the East Quabbin Land Trust



The Country Store, 2013

Berube Real Estate of Petersham, MA donated funding support for printing of this catalogue.

---

## The Country Store Benefit

# Auction Lots ~ Live & Silent

Enjoy! Bid early and often for a good cause!

---

### Live Auction: Lots #1 – 21

The July 27 Live Auction begins at 5:30 PM on Petersham Common.  
Join in and watch for further details of live auction items listed below.

Items with a minimum starting bid are noted as such.

### 👉 Hats off to The Country Store! A Live Auction

❑ 1. **3 Night Stay at Center Sandwich, N.H. House** MIN. BID: \$300

FOR MAX. OF 10 PEOPLE

Bordering on the White Mountain National Forest Sandwich Range facing the house, the property sits on a secluded Lake Dinsmore with its own swimming dock.

The village of Sandwich on Squam Lake is nearby. Opportunities for fishing, hiking, skiing, kayaking, and canoeing (bring own equipment). Fully equipped house.

Sleeps 10 total, 8 on beds more on floor. Dates to be at mutual convenience in 2013–2014.

Retail value: \$900. [http://en.wikipedia.org/wiki/Center\\_Sandwich,\\_New\\_Hampshire](http://en.wikipedia.org/wiki/Center_Sandwich,_New_Hampshire)

Donor: Sarah Selden

LOT 1



❑ 2. **One Week Stay at Cottage in Round Pond, Muscongus Bay on Maine coast**

FOR MAX. 4 PEOPLE

Just a short walk from Round Pond Harbor, Maine. Up to 4 persons can stay in this two bedroom cottage in this mid coast fishing village. Round Pond is 61 miles from Portland, ME.

[http://www.tripadvisor.com/Tourism-g40844-Round\\_Pond\\_Maine-Vacations.html](http://www.tripadvisor.com/Tourism-g40844-Round_Pond_Maine-Vacations.html)

Enjoy village life, lobsters at the harbor, golfing, beaching, hiking, kayaking nearby. Dates to be at mutual convenience. Value: \$800

Donor: Tom and Michele Cahill

LOT 2



- ❑ **3. “Haying in the Meadow” – Watercolor by Sheila Youd**  
Original watercolor by Petersham artist Sheila Youd. Matted, and framed. Retail value: \$275  
Donor: Sheila Youd
- ❑ **4. Sunset Cruise on Queen Lake in Phillipston**  
An evening cruise for 4 guests around beautiful Queen Lake in Phillipston with hors d’oeuvres and refreshments provided. On date to be arranged at mutual convenience.  
Donor: John Colby
- ❑ **5. Antique Portable Writing Desk with 1847 Inscription** MIN. BID: \$100  
Mahogany. Circa 1847 Petersham inscription from the owner Samuel Avery Chamberlin of Petersham. Retail value: \$200  
Donor: Brian Miner
- ❑ **6. Handcrafted Bird Bath from Local Stone by Chris Jenkins**  
Handcrafted of local stone by Petersham stone mason.  
Donor: Chris Jenkins
- ❑ **7. Half Gallon Grade A Petersham Maple Syrup**  
Petersham’s liquid gold – half gallon of Grade A Light Amber Syrup.  
Donor: Fran Misiuk
- ❑ **8. Pot O’ Beans**  
Baked beans for 6–8 people cooked according to old family recipe to be delivered to near Petersham or picked up if at any distance), in traditional bean pot on mutually convenient date.  
Donor: Linda and Bob Paquet
- ❑ **9. Septic Pump Out** MIN. BID: \$50  
Pumping of your septic tank can be arranged anywhere in north or east Quabbin region until July 2014. Retail value: \$275.  
Donor: Charlie Buell, Petersham Sanitary Services
- ❑ **10. Motorized Go Cart, Trailmaster XRX** MIN. BID: \$1000  
Like new motorized Trail Master XRX Go Cart  
Donor: Allen and Ruth Rubin
- ❑ **11. Dinner for Two with Guest Doug Goudie at Picasso Restaurant & Bar, Barre**  
Join Fox News commentator Doug Goudie & his wife for dinner. [www.dineoutpicasso.com](http://www.dineoutpicasso.com)  
Donor: The Pugliese & Goudie Families
- ❑ **12. \$100 Gift Certificate for Picasso Restaurant & Bar, Barre**  
Donor: Dr. Alan and Debra Bachrach



LOT 8



LOT 10

- ❑ **13. Pair of Champion Silkie Bantam Chickens** MIN. BID: \$75  
 A pair of these beauties, raised in Hardwick by a top award winning Master Breeder, Master Exhibitor. American Silkie Bantam Club, American Bantam Club, American Poultry Association. Comes with a carrying cage, food and water cups. Retail value: \$130 [www.goldeneggfarm.com](http://www.goldeneggfarm.com)  
Donor: Kate Morreale, Golden Egg Farm



LOT 13

- ❑ **14. New Roadster Raleigh Bicycle** MIN. BID: \$300  
 Classic Roadster model. Black. The size can be swapped for another by arrangement with Kip Chinian. Retail value: \$550. [www.cambridgebicycle.com](http://www.cambridgebicycle.com)  
Donor: Kip Chinian, Cambridge Bicycle

- ❑ **15. Pair of Hickory Boards 9 ft Super wide Book Match Set – 1st Pair**  
 Pair of shag bark hickory book match set 1 3/8 in thick and 30–32 inches wide. Great for table top, bar top, etc.  
Donor: Roger Graves, Contractor, Barre



- ❑ **16. Hickory Boards 9 ft Super wide Book Match Set – 2nd Pair**  
 Pair of shag bark hickory book match set 1 3/8 in thick and 30–32 inches wide.  
Donor: Roger Graves, Contractor, Barre



- ❑ **17. Antique Children’s School Desk**  
 Terrific school desk in excellent condition.  
Donor: Laurie Coombs

- ❑ **18. Annettie’s Abbondanza Italian Pastry Party** LOTS 15 AND 16  
 Enjoy a delicious selection of homemade Italian pastries. Includes six dozen Edna's Italian Cookies (small, round, anise cookies with a confectionary sugar glaze), two dozen Italian Pizzelles (large, thin anise cookies lightly sprinkled with confectionary sugar), and three dozen Pecan Cups, little pecan pie cookies (brown sugar, chocolate extract, and walnuts). Includes Illy Italian coffee and ‘As the Romans Do,’ a memoir of an American living in Rome. Delivered within the north or east Quabbin region. Not available during Thanksgiving through December.  
Donor: Annette and Jim Ermini

- ❑ **19. Walk and Lunch with Lucius Spooner** MIN. BID: \$25  
**UP TO 6 GUESTS**  
 “Learn a Sense of Place Where You Live.” Historic figure, Lucius Spooner (a/k/a Larry Buell) will research, then lead a 2 hour walk around a place of your choice in the north or east Quabbin region. Lucius will provide lunch and beverages for up to 6.  
 On a date to be arranged at mutual convenience. Retail value: \$125  
Donor: Larry Buell



LOT 19

---

❑ **20. Portrait of President George & Barbara Bush by Troy Word**

Matted portrait by professional photographer. [www.troyword.com](http://www.troyword.com)

Donor: Troy Word

❑ **21. Portrait of President Barak Obama by Troy Word**

Matted portrait by professional photographer. [www.troyword.com](http://www.troyword.com)

Donor: Troy Word

---

## Silent Auction – Items Galore

**The Silent Auction begins on July 19 and closes on July 27  
at 7:00 PM on Petersham Common.**

**Items with a minimum starting bid are noted as such.**

☞ **R&R and Recreation - Experience This!**

❑ **22. Seven Night Stay in the Bahamas** MIN. BID: \$300  
**at Lime Reach House on Great Guana Cay, Abaco**

Located on a secluded ocean beach with bay dock, this rustic family retreat sleeps 6 on beds and more on inflatables. Snorkeling, reefs, birding, fishing are at hand with rental boats, bikes, kayaks, diving, restaurants and grocery in village within walking distance.

Caretaker assistance, utilities, housekeeping amenities included.

Dates to be at mutual convenience in 2013–2014.

Donor: Stephanie Selden

❑ **23. Seven Night Stay at Center Sandwich, N.H. House on Lake Dinsmore**

**FOR MAX. 10 PEOPLE** MIN. BID: \$700

Bordering on the White Mountain National Forest Sandwich Range facing the house, the property sits on a secluded Lake Dinsmore with its own swimming dock. The village of Sandwich on Squam Lake is nearby. Bring your equipment for fishing, hiking, skiing, kayaking, and canoeing. Fully equipped house sleeps 10 total, 8 on beds. Dates to be arranged at mutual convenience in 2013–2014. Retail value: \$2500.

[http://en.wikipedia.org/wiki/Center\\_Sandwich,\\_New\\_Hampshire](http://en.wikipedia.org/wiki/Center_Sandwich,_New_Hampshire)

Donor: Donor: Sarah Selden



LOT 3



LOT 4

❑ **24. Horse Riding or Driving Lessons with Larry Poulin**

Five (5) Riding or Driving Lessons in a classical way.  
With U.S. Equestrian Team pair driving champion Larry Poulin  
at his Petersham Farm. Retail value: \$500.

Donor: Larry Poulin



LOT 24

❑ **25. Harvard Forest Tour** MIN. BID: \$50

Harvard Forest Outreach Manager Clarisse Hart will lead a group of 1–4 guests on your choice of visits which could include the Fire Tower with exclusive access to observatory and distant views or an in depth tour of long term climate research sites and forest natural history. Mutual date to be determined. Retail value: \$200. [harvardforest.fas.harvard.edu/](http://harvardforest.fas.harvard.edu/)

Donor: Clarisse Hart

❑ **26. Horseback Trail Ride in Petersham**

Rebecca Jackson will lead one person horseback riding on the west side of Petersham. Date to be arranged in 2013.

Donor: Rebecca Jackson



LOT 26

❑ **27. Guided Fishing Trip on Quabbin Reservoir**

Up to 3 people can spend a day on the Quabbin Reservoir with expert fisherman, Mark Koenig, who will provide boat, guidance and knowledge of where those big fish hide out. Date to be arranged before season ends October 12, 2013.

Donor: Mark Koenig

❑ **28. Two Hour “Hands on Healing” Session with Katja Esser** MIN. BID: \$25

A variety of healing modalities are used by Katja, including Continuum Body Work, Access Consciousness (Bars) and/or E.F.T. Emotional Freedom Techniques (Tapping). On a mutual date to be arranged anywhere in the north or east Quabbin region. Retail value: \$100. [www.ritualexpressions.com](http://www.ritualexpressions.com)

Donor: Katja Esser

❑ **29. Beer Making Party with Take Home Beer** MIN. BID: \$35

Receive a hands-on lesson in home brewing from a brewer with 10 years experience. The winning bidder will work alongside Ry Parcell to brew up a 6 gallon batch of beer. Ry will work with you to decide what kind of beer you would like to brew. The session will include tastings of various craft and home brewed beers. After 4-6 weeks you will receive the beers bottled and ready to enjoy. Lesson can accommodate any level of experience and any number of people. Brew day will be approximately 4 hours in Petersham. Mutual date to be determined.

Donor: Ry Parcell

## Art & Handcrafted Works from Area Artists

### 30. **Oak Salad Bowl with Tossers by Chris Pugliese**

Hand made bowl finished with good grade mineral oil and maple wood salad tossers. Retail value: \$100

Donor: Chris Pugliese

### 31. **Handcrafted Basket Full of Goodness** MIN. BID: \$40

Sheldon Farm Reed Basket handcrafted in Barre, loaded with antique and modern postcards of Petersham and a \$40 Gift Certificate to the Petersham Art Center. Retail value: \$90  
[www.sheldonfarmbaskets.com](http://www.sheldonfarmbaskets.com) / [www.petershamartcenter.org](http://www.petershamartcenter.org)

Donor: Barbara and Phil Hanno



LOT 31

### 32. **Handknit Wool Hat by Sue Hellen**

Hand knit woolen hat by Sue Hellen. Retail value: \$20

Donor: Sue Hellen

### 33. **Handknit Wool Socks by Sue Hellen**

Hand knit by Sue Hellen. Retail value: \$40

Donor: Sue Hellen

### 34. **Handknit Wool Sweater by Anne Perkins** MIN. BID: \$35

Color is beautiful cornflower blue.

Donor: Anne Perkins

### 35. **Original Engraved Print by Abigail Rorer**

[www.theloneoakpress.com](http://www.theloneoakpress.com)

Donor: Abigail Rorer, Lone Oak Press, Petersham



LOT 35

### 36. **Framed Color Photograph by Sandra Whaley** **“Fragrant Water Lily Pads, Late Autumn Reflectons North Quabbin”**

Donor: Sandra Whatley

### 37. **Beaded Sterling Silver Necklace by Susan Paquet**

Handcrafted necklace with beads.

Donor: Susan Paquet

### 38. **Sterling Silver Necklace by Polly Pillsbury** MIN. BID: \$40

Handcrafted with amazonite beads and a large faceted piece of Caribbean chalcedony.

Donor: Polly Pillsbury



- 
- ❑ **39. Earrings by Polly Pillsbury** MIN. BID: \$15  
Handcrafted in sterling and aventurine  
Donor: Polly Pillsbury
  
  - ❑ **40. Earrings by Polly Pillsbury** MIN. BID: \$15  
Handcrafted in sterling and lapis with antique ceramic beads.  
Donor: Polly Pillsbury
  
  - ❑ **41. “Golden Fog” – Framed Photograph by Patrick Zephyr**  
Limited edition framed photograph Patrick Zephyr print of Harvard Pond scene.  
Retail value: \$190. [www.patrickzephyrphoto.com](http://www.patrickzephyrphoto.com)  
Donor: Patrick Zephyr
  
  - ❑ **42. Hand-carved Half Hull**  
Unique 12 x 42 in, mounted. Acquired from a Nantucket estate. Retail value: \$125  
Donor: Bill Neylon, Village Green Antiques, Barre
  
  - ❑ **43. Double Pie Picnic Basket**  
Large double pie picnic basket with lid painted by Petersham artist Jane Hein. Retail value: \$90  
Donor: Jean and Fraser Sinclair

---

## Food Glorious Food!

- ❑ **44. One Dinner a Month for 3 Months** MIN. BID: \$60  
Chose from a menu and receive one dinner each month for up to 4 guests.  
On mutual dates to be arranged.  
Donor: Jane Lynch Gilbert and Ken Gilbert
  
- ❑ **45. Basket of Fresh Petersham Preserves**  
A basket with jam/cuke relish and vanilla. Retail value: \$30. [www.gracenotefarm.com](http://www.gracenotefarm.com)  
Donor: Donna and Kent Byron, Grace Note Farm, Petersham
  
- ❑ **46. Fall Farm Harvest Bounty** MIN. BID: \$50  
A bushel of potatoes, 10 lbs. storage carrots, 10 lbs. onions.  
All available at harvest time 2013. Retail value: \$125  
Donor: Farm and Field Landworks Farm, Petersham
  
- ❑ **47. Sweetwater Farm Grass Fed Beef for 3 Months** MIN. BID: \$150  
A combination of cuts including steak, kabobs, sausage, and ground to be selected each month by arrangement with Sweetwater Farm. Retail value: \$150. [www.sweetwaterfarmma.org](http://www.sweetwaterfarmma.org)  
Donor: Karen Davis, Sweetwater Farm, Petersham

---

❑ **48. Maple Syrup from Petersham**

One quart of Petersham's liquid gold. Delicious Grade B syrup , from wood fired evaporator.

Donor: Josh Gordon, Quabbin Gate Farm, Petersham

---

☞ **For the Office, Home, Yard, Barn**

❑ **49. Good Reads ~ A Stack of Books**

Stack of Books (on Gardening, Food, Landscape)

Donor: Wendy Howes, Curious Books, Hubbardston

❑ **50. Antique Linen Runner**

Fine embroidered runner with rose motif.

Donor: Wendy Howes

❑ **51. Fine Linen**

Hand embroidered, from Scotland

Donor: Wendy Howes

❑ **52. Muffin Basket from Portugal**

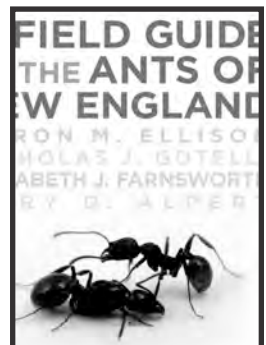
Muffin or Dinner Roll Basket from Portugal

Donor: Wendy Howes

❑ **53. Collection of Harvard Forest Books & Cap** MIN. BID: \$30

'More than a Woodlot' by S. Long, 'New England Forests Through Time' by D. Foster and J O'Keefe, 'A Field Guide To The Ants of New England' autographed by three of four authors: Ellison, Gotelli, Farnsworth and Alpert. A "thinking" cap accompanies the books. Retail value: \$67. [harvardforest.fas.harvard.edu/](http://harvardforest.fas.harvard.edu/)

Donor: Harvard Forest



LOT 53

❑ **54. Happy Chicken Tractor – \$50 Gift Certificate Toward Purchase**

Keep up to 10 chickens or ducks moving around the yard and safe from predators.

The Chicken Tractor sells for retail price \$429.95. To place your order, call 978-724-6662 or visit [www.thelittlechickenfactory.com](http://www.thelittlechickenfactory.com)

Donor: Roy Nilson



LOT 54

**56. Fine Art Glass**

By designer Gro Eriksson – A dish with substance, offering a crystal window into a land of silver. By completely encasing a sheet of real silver in frosted glass, very special dramatic effect is created.

Style: White plate with Silver. Retail value: \$95. [www.abodeon.com](http://www.abodeon.com)

Donor: Abodeon, Cambridge



LOT 56

**57. Kitchen Faucet**

Peerless Stainless Steel pull down faucet Model No. P88102LF-SSSD.

In the box, new, never been used. Retail value: \$276

Donor: Betty Davis



LOT 57

**58. Bonsai Bonanza**

Six ceramic bonsai dishes in assorted sizes and colors and 4 plant trays with all related bonsai tools including

8 specialty scissors beautifully presented in a canvas case.

Donor: Linda and Bob Paquet

**59. Copper Watering Can**

Houseplant size

Donor: Linda and Bob Paquet

**60. Assorted Baskets**

Donor: Fred Day

**61. Radio** MIN. BID: \$50

Excellent condition.

Donor: Marianne Hinton

**62. Portable Photo/Document Copy Stand**

Professional copy stand for mounting cameras for photographing work.

Foldable legs for compact carrying.

Donor: John Woolsey

**63. Vintage Yardstick #1**

Higgins - Furniture & Funerals

Donor: Fred Day

**64. Vintage Yardstick #2**

Higgins - Furniture & Funerals

Donor: Fred Day

- 
- ❑ **65. Mirror with Cork Frame**  
Donor: Emily Arnold
  
  - ❑ **66. Royal Doulton Figurine**  
“Figure of the Year 2000” Named Rachel. Retail value: \$100  
Donor: Jean and Bob Day, Winterwood Inn, Petersham
  
  - ❑ **67. Two Samsung Cell Phones & Router Box** MIN. BID: \$150  
Brand new. Ready to go with chip installed. With router.  
Donor: Mick and Louise Huppert
  
  - ❑ **68. Massage Table** MIN. BID: \$100  
Folding table professional quality in excellent condition  
Donor: Marianne Hinton
  
  - ❑ **69. Treadmill Exerciser** MIN. BID: \$100  
Mechanical exercise machine almost new  
Donor: Marianne Hinton

---

## 👉 At Your Service & Gift Certificate Galore

- ❑ **70. Gift Certificate for Three Sessions of Accupuncture**  
Licensed accupuncturist Toni Begman, L.Ac. offers three sessions of treatment.  
At Toni Begman’s West Street, Petersham office.  
Donor: Toni Begman
  
- ❑ **71. Garden Weeding**  
Experienced gardener will spend 4 hrs lovingly weeding your garden at a mutually convenient time in nearby location in Petersham or in the north or east Quabbin area.  
Donor: Leslie Beaton, Petersham
  
- ❑ **72. Advertise on petershamcommon.com homepage for 12 months** MIN. BID: \$85  
Business ad spot on local news and info web site operating since 1996, approx. 3,000 per visits month. Your website can be linked in or posting will open on a hosted page. Retail value: \$200.  
Donor: Roy Nilson
  
- ❑ **73. \$100 Gift Certificate for Caledonia Farm Meat, Barre** MIN. BID: \$50  
\$100 Gift Certificate for your choice of grass fed chicken, beef or pork to be collected at the farm in Barre. Retail value: \$100 [www.caledoniafarm.com](http://www.caledoniafarm.com)  
Donor: Caledonia Farm, Barre



- ☐ **74. Services of Home Staging by Julie**  
2 hours of organizing/decluttering services or home consultation for someone moving.  
Donor: Julie Millar, Petersham
- ☐ **75. Gift Certificate for One Hour Massage with Pam Kotoch**  
One hour massage to be arranged by July 2014. In Hardwick Road, Petersham office.  
Retail value: \$60  
Donor: Pam Kotoch, Petersham
- ☐ **76. Gift Certificate for One Hour Massage with Focus on Wellness**  
One hour massage with your specific massage oil blend or using essential/unscented oils or your choice of lotion to be arranged before Dec. 1, 2013.  
In Barre Road, Petersham office. Retail value: \$60  
Donor: Ellen Woodbury, Focus on Wellness, Petersham
- ☐ **77. \$50 Gift Certificate to The Garage, Petersham**  
Todd Coombs and crew will work on your vehicle at The Garage, Petersham. Retail value: \$50  
Donor: Todd Coombs, The Garage, Petersham
- ☐ **78. Complete Ophthalmic Examination for Any Non-Human Family Member**  
Conducted by a board certified veterinary ophthalmologist, exam will include evaluation of all structures of the eye and an assessment of vision. Included will be a test for tear production and glaucoma; an evaluation of all structures from the front of the eye to the back; will check for any abnormalities related to the eyelids and margins, the third eyelid, tissue surrounding the eye, the cornea/sclera, the front chamber, including the iris and pupil. After dilation, the lens, retina, and optic nerve will be assessed. A complete written report will be provided.  
Examination at East Street, Petersham office. Retail value: \$150.  
Donor: Dr. Alan Bachrach Jr., VMD, Petersham
- ☐ **79. \$50 Gift Certificate to Look N Good Landscaping & Garden Center, Barre**  
Use at your leisure (no expiration date).  
Donor: Look N Good Landscaping and Garden Center, Barre
- ☐ **80. Gift Certificate for Peak Expeditions – Peak Paddlesports Boathouse, Orange**  
2 x 2 hour standup paddle board rental with a 30 minute lesson. [www.peakexpeditions.com](http://www.peakexpeditions.com)  
Donor: Peak Expeditions
- ☐ **81. \$100 Gift Certificate to Newly Reopened Country Store, Petersham**  
Donor: Annie and Henry Woolsey
- ☐ **82. \$100 Gift Certificate to Newly Reopened Country Store, Petersham**  
Donor: Nancy Allen and Charles Crowley



LOT 77

## ☞ Oldies but Goodies & Antiques

**83. Antique Russian Samovar** MIN. BID: \$150

This authentic commemorative samovar has been adapted to function as a lamp.

Donor: Rose Levine

**84. 19th Century Antique Barometer** MIN. BID: \$150

Made on Broadway in New York in large decorative wooden case the barometer no longer functions but the original thermometer does.

Donor: Rose Levine

**85. Original Flexible Flyer Sled**

Classic 5 foot long wooden sled with decals in very good condition.

Donor: Linda and Bob Paquet

**86. Millstone** MIN. BID: \$100

Granite millstone measures 20 inches in diameter. Retail value: \$295

Donor: T.S. Mann Lumber Co., Athol

**87. Primitive Yarn Winder**

Excellent condition.

Donor: Laurie Coombs

**88. Large Two-Panel Room Screen**

Two-panel oriental screen (each panel is 26x81 in. – total coverage of 52x81 in.) Panels bordered with 2 1/2 in. stained and lacquered wooden frame. Fabric has a tea house motif surrounded by blossoms, flowers, oriental trees. Dark background with orange, burnt yellows, and greens/greys.

Donor: Louise and Mick Huppert

**89. Spittoon**

Donor: Fred Day

**90. Medium size Mirror**

19 x 31 inches, wood frame.

Donor: Fred Day

**91. Chair with Cane Seat**

Donor: Fred Day

**92. Chair with Cane Seat**

Donor: Fred Day



LOT 83



LOT 84

---

## Clothing and Bags

### 93. **Hats & More Hats**

On July 27 watch for this collection of 11 hats in variety of styles and colors to be modeled and auctioned off individually.

Donor: Marianne Hinton

### 94. **Hand Bag by Vera Bradley**

Donor: NIta Bates

### 95. **Cashmere Sweater**     MIN. BID: \$35

Beautiful cashmere sweater. Mint green color pullover in medium size, excellent condition.

Donor: Marianne Hinton

### 96. **Cashmere Sweater**     MIN. BID: \$35

Navy color turtleneck style in large size, excellent condition

Donor: Marianne Hinton

### 97. **Cashmere Sweater**     MIN. BID: \$35

Brown color turtleneck style in large size, excellent condition

Donor: Marianne Hinton

### 98. **Cashmere Sweater**     MIN. BID: \$35

Grey color pullover style, excellent condition

Donor: Marianne Hinton

### 99. **Cashmere Sweater**     MIN. BID: \$35

Sky blue color cardigan style large size, excellent condition

Donor: Marianne Hinton

---

## And Don't Miss Everything Else!

### 100. **Gift Certificate for Orthopedic Treatment from Doreen Frost**

An orthopedic pillow comes with this Gift Certificate for a treatment under the professional care of Petersham chiropractor Doreen Frost.

At Hardwick Road office, Petersham

Donor: Doreen Frost

Petersham Chiropractic

---

❑ **101. Antique “Minnesota” Treadle Sewing Machine, 1890s**

The ultimate in low energy use – foot power, no motor. Machine is in good working condition. Table needs refinish to bring back to life. The “Minnesota” was a vibrating shuttle model manufactured by the Goodrich Sewing Machine Co. of Chicago and sold by Sears, Roebuck. This 1890s machine used a New Home type shuttle, and a Domestic styled bobbin winder.

Donor: Pat Flemati



LOT 102

❑ **102. Antique Small Bureau with Mirror**

Donor: Doreen Frost

❑ **103. Beautiful Handcrafted Berry Bowl**

Donor: Christine Lynch Witkos



LOT 104

---



---

The Restore the Store Community Benefit  
is an initiative of the East Quabbin Land Trust  
and the Petersham community.

---

East Quabbin  
LAND TRUST 

---

120 Ridge Road  
P.O. Box 5  
Hardwick, Massachusetts  
01037  
[www.eqlt.org](http://www.eqlt.org)