

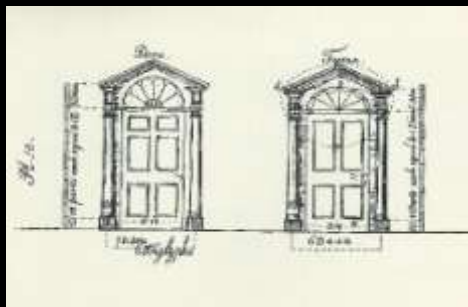
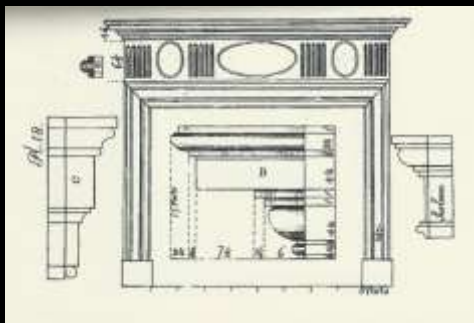
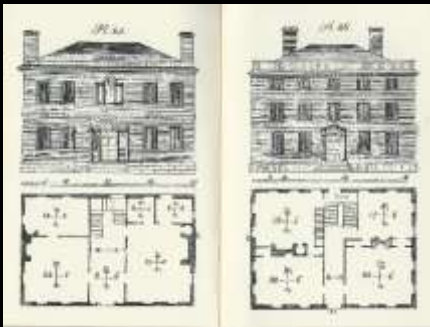


Frohloff Farmhouse, c. 1800

Owned by East Quabbin Land Trust

Presentation by J. Ed Hood

February 25, 2015



THE
COUNTRY BUILDER'S
ASSISTANT:

—CONTAINING—
A COLLECTION OF NEW DESIGNS OF
CARPENTRY AND ARCHITECTURE;

Which will be particularly useful, to Country Workmen in general.

ILLUSTRATED WITH NEW AND USEFUL DESIGNS OF
Frontispieces, Chimney Pieces, &c. Tuscan, Doric, Ionic, and Corinthian
Orders, with their Bases, Capitals, and Entablatures: Architraves for Doors,
Windows, and Chimneys: Cornices, Base, and Surbase Mouldings for
Rooms: Doors, and Sashes, with their Mouldings: The construction of Stairs,
with their Ramp and Twist Rails: Plan, Elevation, and one Section of a
Meetinghouse, with the Pulpit at large: Plans and Elevations of Houses:
The best Method of finding the length, and backing of Hip Rafters: Also,
the tracing of Groins, Angie Brackets, Circular Soffits in Circular Walls, &c.

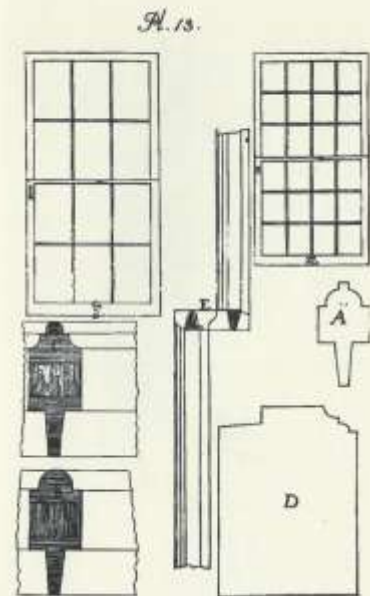
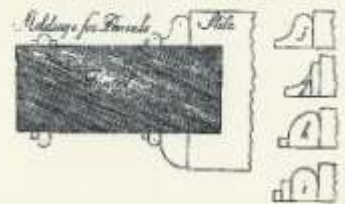
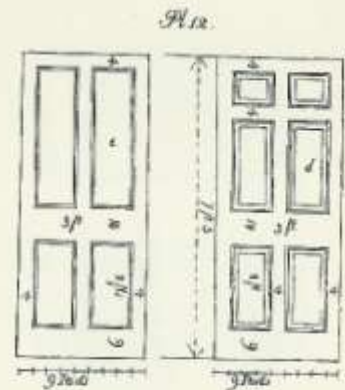
CORRECTLY ENGRAVED ON THIRTY COPPER PLATES;
WITH A PRINTED EXPLANATION TO EACH.

BY ASHER BENJAMIN.

PRINTED AT GREENFIELD, (MASSACHUSETTS)
BY THOMAS DICKMAN.

M, DCC, XCVII.

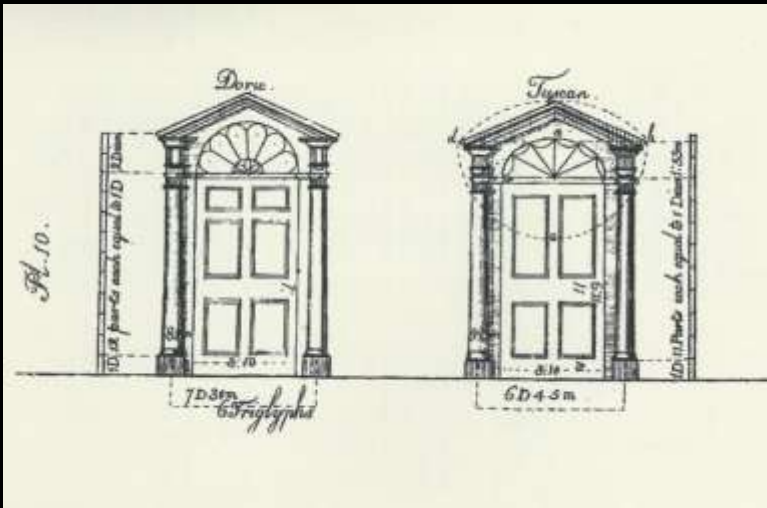
APPLEWOOD BOOKS
Bedford, Massachusetts



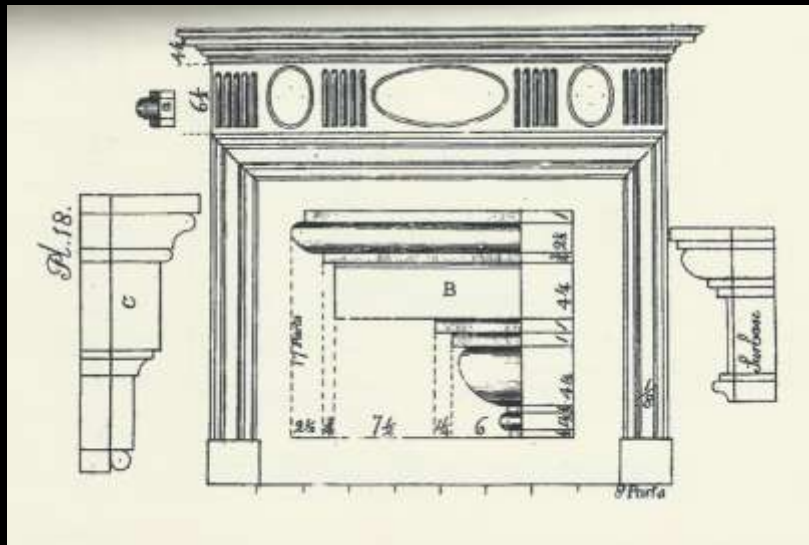
The Frohloff farmhouse is a federal style building. Options for architectural details can be found in the builder's guide by Asher Benjamin.

Federal style architectural details

1780 - 1830



Either half-circle or oval windows above the front door are in the Asher style guide. Frohloff has a half-circle door light.



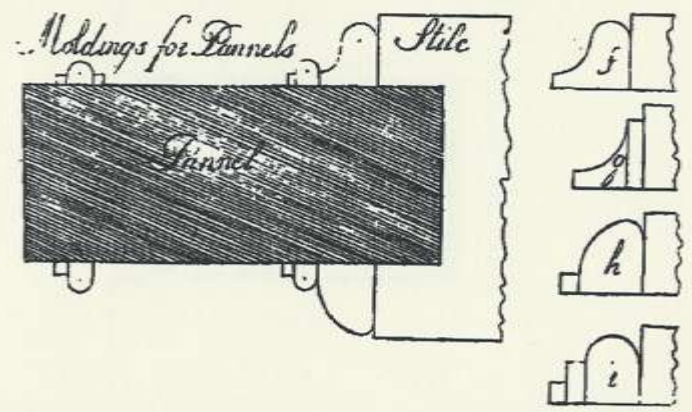
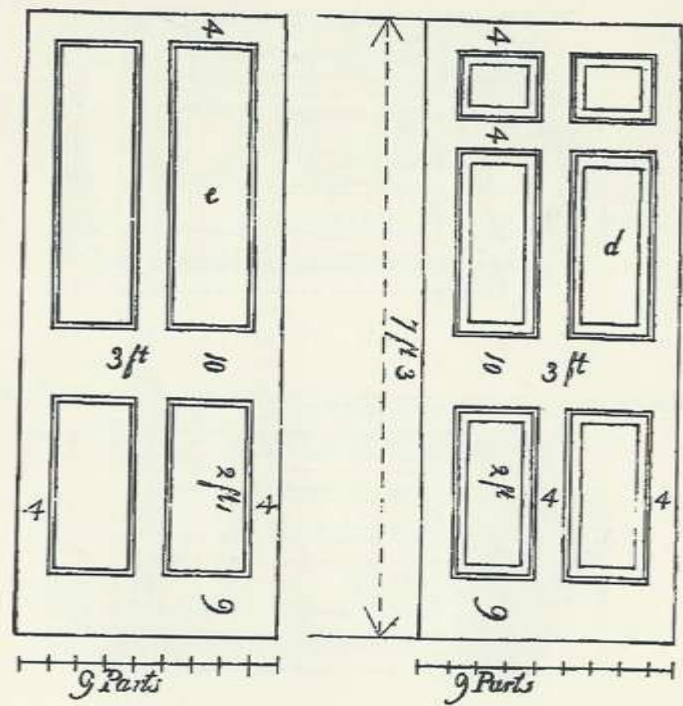
Mantel details show profile and pattern options. Frohloff has a variation on the style guide.

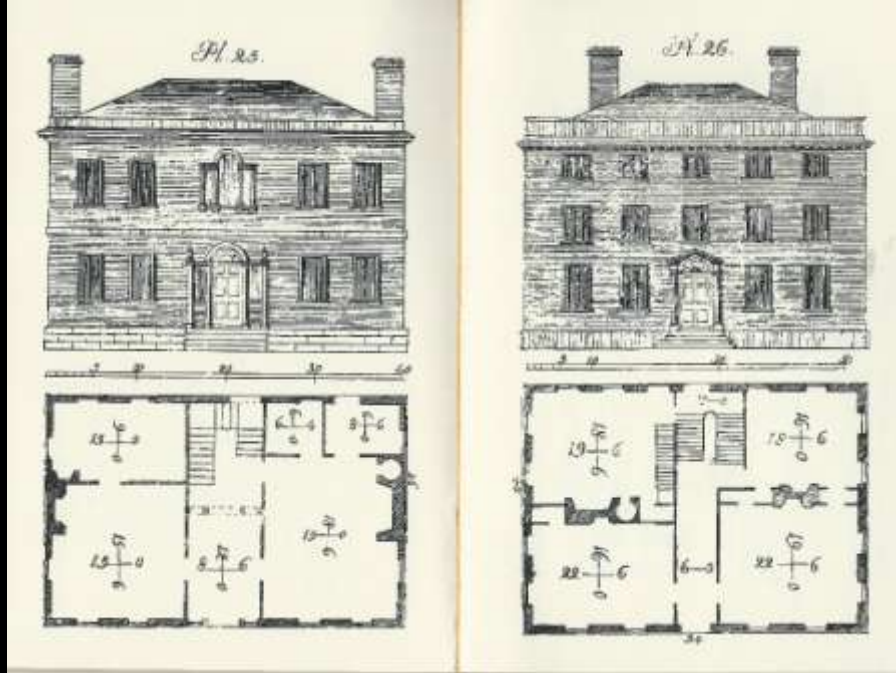




Frohloff door matches the door on the right side of the style guide.

Pl. 12.





These are two other houses that show variations on the federal period style construction.

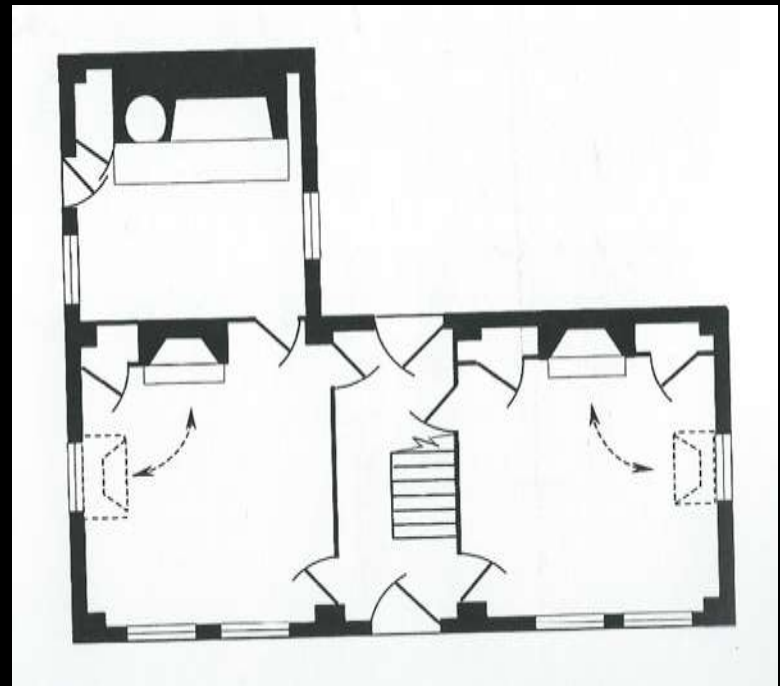
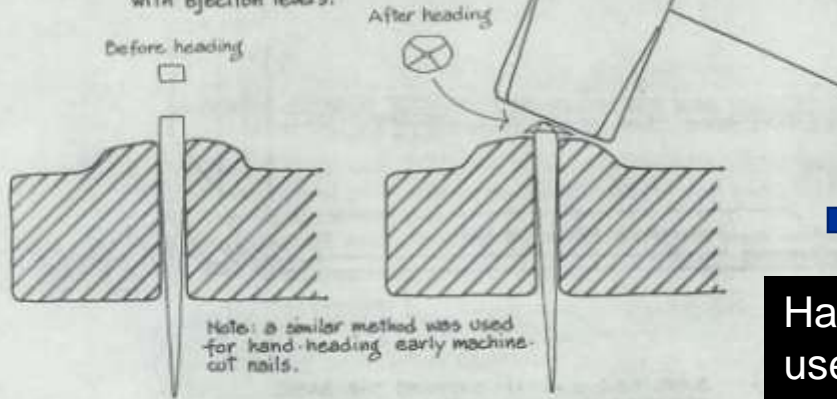


FIGURE 1

CROSS-SECTION THROUGH NAIL HEADING TOOL

Tapered shank allows nail to become wedged in hole of heading tool. Size of nail and hole must be related to allow enough projection to form the head. Top of nail is heated to "work" the metal. Heading tools came in a variety of designs: some were hand-held and rested on face of anvil - others were mounted in the hardy hole of the anvil - some were equipped with ejection levers.

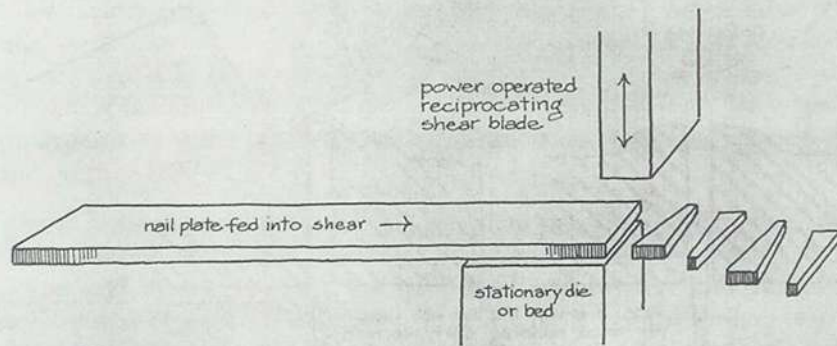


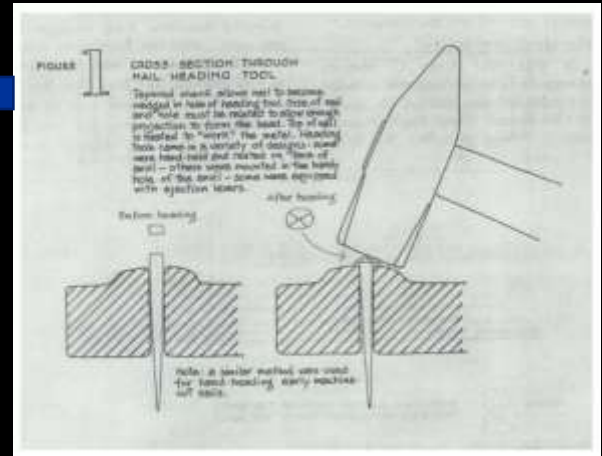
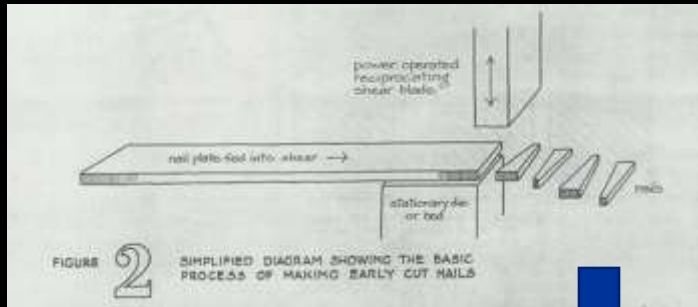
Hand made nails are used in the attic.



FIGURE 2

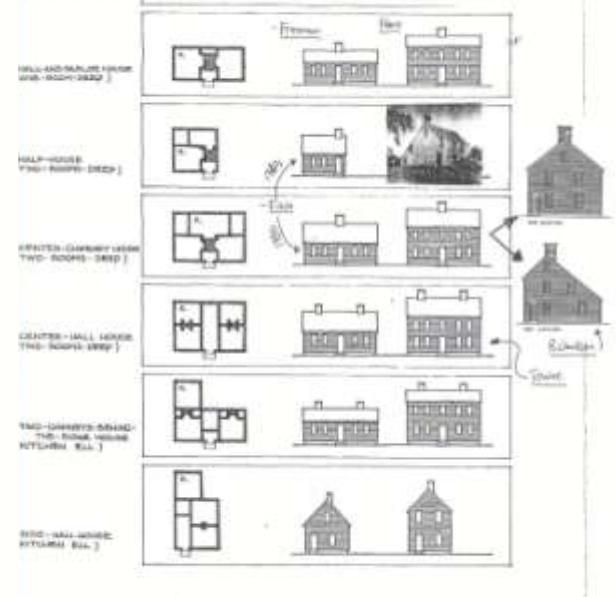
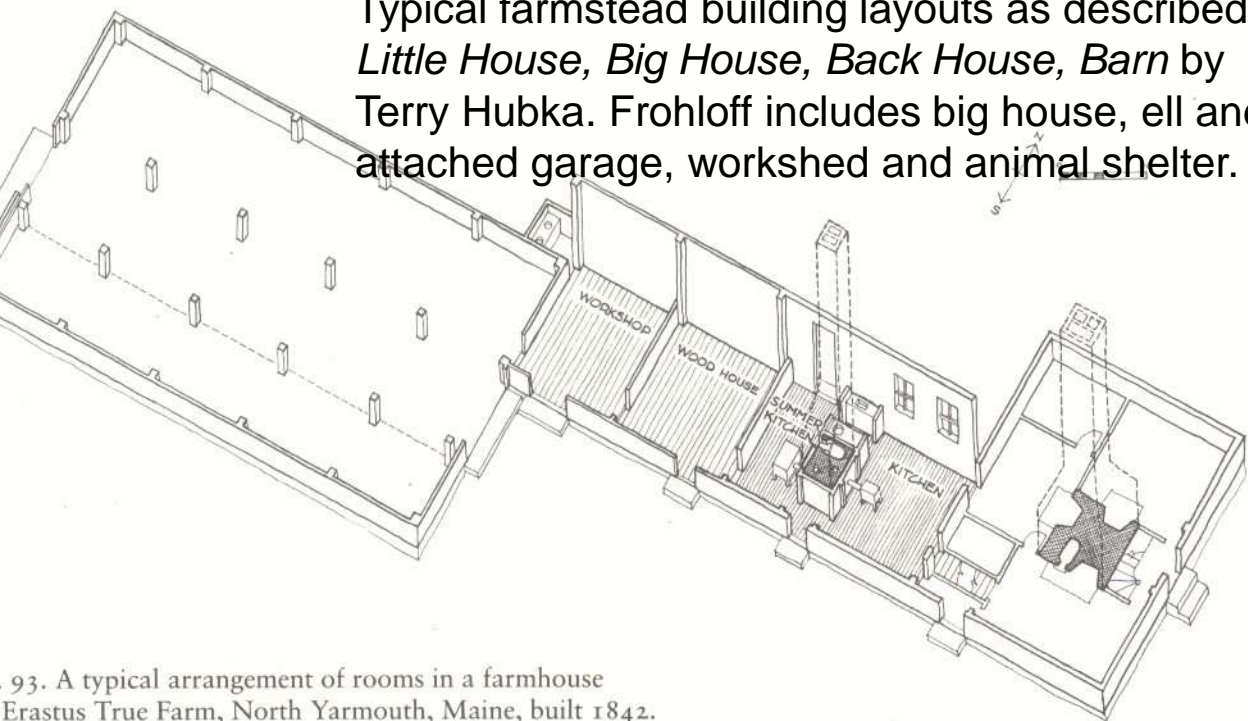
SIMPLIFIED DIAGRAM SHOWING THE BASIC PROCESS OF MAKING EARLY CUT NAILS





Both hand made nails and cut nails are used in the original roofing.

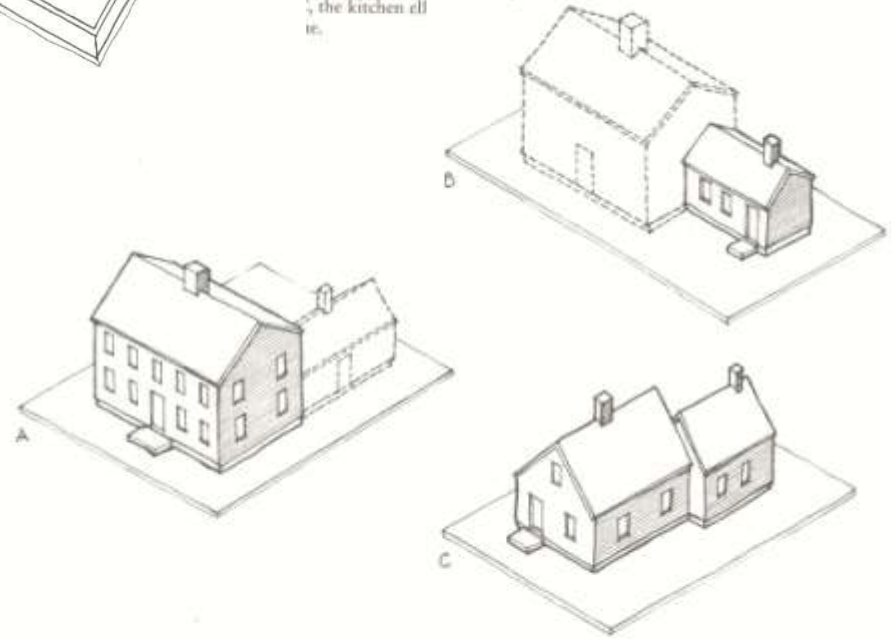
Typical farmstead building layouts as described in *Little House, Big House, Back House, Barn* by Terry Hubka. Frohloff includes big house, ell and attached garage, workshed and animal shelter.



93. A typical arrangement of rooms in a farmhouse
Erastus True Farm, North Yarmouth, Maine, built 1842.



Diagram for the little house kitchen:
C, big house; B, a small original
house, the kitchen ell
etc.





Renovations over the years changed the open fireplace to be fitted with a wood stove. The pine board is a lighter color where it was added as the hearth was changed. The chimney support in the basement was inscribed with 1890.